



2009-10 Board of Directors

Jerry Santeiro (Chairman)
 Irela Bagué (Chairman-Elect)
 Gabe Castrillon (Treasurer)
 William A. Bonn, Esq. (Secretary)
 John Clark Adams, Esq.
 Stephen F. Coxhead
 Susi Davis
 Richard DeWitt, Esq.
 David Evensky
 Heather M. Harris
 Betty Jimenez, R.N.
 Jacqueline R. Menendez
 W. Allen Morris
 Aurelia A. Reinhardt
 Carolina Rendeiro
 Michel Rittenberg
 Mary Lou Rodon-Dolara, Esq.
 Ana María Rodríguez-Díaz de la Portilla
 Jeannett Slesnick
 Marielena Villamil

Ex-Officio Members

Mark A. Trowbridge, CG Chamber
 City Commissioner Wayne "Chip" Withers

Council Of Past Chairs

Willy Bermello (1992-95)
 John P. Fullerton (1995-96)
 Ronald A. Shuffield (1996-97)
 Mayor Don Slesnick (1997-99)
 José A. Calvo (1999-2000)
 George M. Corrigan (Mayor) (2001-02)
 Mary M. Young (2002-03)
 Henry "Hank" O. Langston (2003-04)
 William P. "Bill" Murphy (2004-05)
 Yolanda Woodbridge (2005-06)
 J. Thomas Cookson (2006-07)
 Howard Glicken (2007-08)
 Jeannett Slesnick (2008-09)

Directors Emeriti

Pat H. Clarke
 Marian Krutulis

Coral Gables Community Foundation

3001 Ponce de Leon Boulevard
 Andria Hanley, Executive Director

Mailing Address

1825 Ponce de Leon Blvd., PMB #447
 Coral Gables, FL 33134-4418

Call for Advertising Rates/Schedule

T 305.446.9670 | F 305.446.3773
 Advertising Contract available online
 at www.gablesfoundation.org

FOUNDATION GIVES GRATITUDE TO 2008-09 BOARD AND WELCOMES NEW LEADERSHIP



Fleming's Steakhouse generously hosted our annual **Appreciation and Installation event** on February 23rd, for 2008-09 Foundation Board Members who had completed their terms, Board Members who are staying on, and to welcome new Board Members coming onboard for 2009-10.

Our special thanks to **Anthony Baradat, Greg Barnes, Jesus ("JC") Cabrera, Stanley Davidson, Jorge de la Hoz, Lauren**

Harrison Genovese, Howard Glicken, Vivian Miller, Michel Rittenberg, John Roscio, and Judy Zeder for their service to the 2008-09 Board.

Many new initiatives came to fruition under the leadership of 2008-09 Chair **Jeannett Slesnick** and through the efforts of her team. Among other things, **Coral Gables@HOME** is now well under way, and the **Gables Home Page** project is in the works as the Board transitions into a new year.

After the outgoing Board Members were thanked, 2009-10 Board Members were recognized, and **Mayor Don Slesnick** swore in new Officers. The Foundation is proud to welcome the following new Members to the 2009-

2010 Board of Directors: **Stephen Coxhead, Susi Davis, David Evensky, Heather Harris, W. Allen Morris, and Carolina Rendeiro.**

Under the leadership of 2009-10 Chairman **Jerry Santeiro**, the Board plans to continue the great work of past leaders and move our exciting new initiatives forward in our community.

Special thanks also to the always courteous and professional **Fleming's staff, and to Rocco Angelillo & Christopher Wakeman** for their hospitality and continuing generous support of The Foundation!

If you are interested in serving on the Board, please call us at 305.446.9670.



L to R: Mayor Don Slesnick stands with the newly sworn-in 2009-10 Board: David Evensky; Carolina Rendeiro; Richard DeWitt, Esq.; Jerry Santeiro (Chair); Stephen Coxhead; Jeannett Slesnick; Susi Davis; Gabe Castrillon (Treasurer); Heather Harris; Irela Bagué (Chair Elect); Mary Lou Rodon-Dolara, Esq.; Ana María Rodríguez-Díaz de la Portilla; Marielena Villamil



New Chairman Jerry Santeiro graciously thanks outgoing Chairman Jeannett Slesnick for her service during 2008-09



Member Jeanann Rigl, Director Emeritus Pat Clarke and her husband Jay Clarke, and Board Member Marielena Villamil



Member Nancy Illiffe accepts an appreciation award on behalf of Ralph Sanchez of Old Spanish Village from Jeannett Slesnick



Foundation Members Lu Coxhead and Ginger Jochem, and Board Member Richard DeWitt, Esq.



Member Mike Harris and New Board Member Heather Harris



Board Member Ana María Rodríguez-Díaz de la Portilla and New Board Member Susi Davis



Past Chair (2002-03) Mary Young, and CoralGables@HOME Executive Director, Marli Lutz



Chairman's Corner

A Message from our Chairman **Jerry Santeiro**

The Coral Gables Community Foundation is pleased to announce the appointment of **Andria Hanley** as our new Executive Director. Pictured at right, with Irela Bagué (below) and Jeannett Slesnick (far right) at our annual Membership Reception at Old Spanish Village' Sales Gallery (see back cover for details), Andria is already making great strides to further the initiatives of the Foundation. We are excited to begin a new year, and welcome your comments, questions, or suggestions. We hope that you enjoy this issue of **Coral Gables Connections**, and if you are not already a Foundation member, will consider joining us this year.



ALL THE HELP YOU NEED AT AN AFFORDABLE RATE . . . CORALGABLES@HOME MEMBERSHIP SERVICES HAVE BEGUN!



Volunteer Drivers NEEDED

CoralGables@HOME officially began providing services to its members on February 2nd. Imagine never having to wonder who to call for household repairs and services, or feeling as though you are imposing on friends, family, and neighbors whenever you need help, and if you get sick, your groceries and prescriptions can be delivered to you. **"A CoralGables@HOME membership can be better than**

a great neighbor when it comes to assistance with household services. We are there when you need us" says GAY BONDURANT, CoralGables@HOME Advisory Council member. Anyone over 50 living in Coral Gables can join, and enjoy all the benefits of having **just about anything you might need** be just a phone call away. Best of all, you may even meet new friends and neighbors at a CoralGables@HOME social event or wellness class.

Of the four categories of services CoralGables@HOME offers: **Household, Social & Cultural, Wellness, and Transportation**, transportation is the most critical benefit for members who do not drive. Although membership includes transportation to vital places like the grocery store, many members need help with short trips to the barber shop or beauty

parlor, etc. Fortunately, a recently passed Florida law (HB 359) is paving the way for volunteer drivers by protecting them from certain kinds of liability and prohibiting insurance companies from increasing rates for those who volunteer to drive. Plus, our volunteer drivers receive CoralGables@HOME membership credits!

(Credits can be transferred to friends or family.) Volunteers may set their own schedule, but must have a safe driving record and be insured. If you would like to volunteer, please call us.

Marli Lutz, Executive Director
305.443.4011

www.gablesfoundation.org



Our recent reception at the home of Barbara Reese (pictured above) was a great success.

► We Invite You To Come Find Out What We're All About.

Join us for **Coffee & Danish** at OUR NEXT EVENT . . . Tuesday, May 5th at the **Coral Gables Congregational Church**, 3010 De Soto Boulevard, at 10:00 AM. *For more information, please call us at 305.443.4011.*

American Airlines, AA.com and We know why you fly are trademarks of American Airlines, Inc.



We know sometimes the biggest reasons to get involved in the community are also the smallest.

At American Airlines, we believe the most valuable resources of any community are its people. And helping people keep their communities thriving is something we're pleased to play a part in every day. Which is why American proudly supports charities, education, and health programs to make life better. For all of us.



We know why you fly®
American Airlines
AA.com



Coral Gables Museum "Building A Dream"

The Coral Gables Museum is collaborating with area schools to engage students in the Museum's **Civic Arts focus** with programs promoting education in architecture, urban design and planning, sustainable development, and historical and environmental preservation. Currently, students from **Shenandoah Middle**

School's Museum Magnet Program are touring and photographing Gables' landmarks and researching the City's architectural and cultural history. Their works, both photographic and literary, are the basis for the **"Building a Dream"** project. Funded by a grant from **The Villagers**, the students are creating 10 handmade books, both in English and Spanish, with the assistance of a bookmaking consultant. The book will be released in May at a reception hosted by **Books and Books**. In addition to the Shenandoah project, the Museum is planning an **Earth Day celebration** with **Coral Gables Elementary** and will install a community garden at the school, thanks to a donation from the **Coral Gables Community Foundation**. For more information visit coralgablesmuseum.org, or call 305-910-3996.

The Coral Gables Community Foundation is a proud supporter of
The Actors' Playhouse at the Miracle Theatre
 actorsplayhouse.org | 305.444.9293



Community Organization Spotlight

JUNIOR LEAGUE of MIAMI



**Junior League of Miami
Forms a VOLUNTEER
PARTNERSHIP with
The Coral Gables
Community Foundation**

The Junior League of Miami has enhanced the lives of women and children in the community since 1926. Currently located at 713 Biltmore Way, in the heart of the Gables, the Junior League of Miami (JLM) is a dynamic community force comprised of nearly 1,000 women who are committed to promoting voluntarism, developing the potential of women, and improving communities through the effective action and leadership of trained volunteers. Its purpose is exclusively educational and charitable. The Junior League of Miami makes a significant impact on the lives its members touch through community involvement. Current community projects that benefit from trained volunteers include: Family Literacy nights, mentoring of teen moms at **Hurwit Crisis Shelter**, and mentoring and regularly participating in outings and activities at **Inn Transi-**

tion North and Inn Transition South (both facilities for women and children in residence who are escaping domestic violence and building new lives). The Junior League of Miami also facilitates playgroups with families with blind and severely visually impaired babies at **Miami Lighthouse for the Blind and Visually Impaired**. Members also coordinate donations of food, delivery of the food, and set up of apartments for women transitioning from the **Lotus House Women's Shelter** for women and infants, to their own independent residences. In addition to the hands-on work, the Junior League of Miami provides grant funding to a variety of initiatives and community programs that share its fo-



cus on women and children. The Coral Gables Community Foundation has been fortunate to have on its staff a leader who will take over as the president of the Junior League of Miami in 2010, **Loretta Nido**. Loretta (pictured at left) has served as our Program Manager as well as our accounting department for the past year while the Foundation Board worked toward re-focusing the direction of the Foundation, hiring new staff, and relocating the office. We are grateful for her dedication to the transition of the Foundation, and we support her and congratulate her in her new role. For further information regarding the Junior League of Miami, please contact the JLM Headquarters at 305-443-0160.

Coral Gables Community Foundation is pleased and proud to partner with the Junior League of Miami in a volunteer commitment to our CoralGables@HOME initiative. Junior Leaguers will be serving as volunteers in the Coral Gables@HOME member services area, and will meet at the Foundation on a monthly basis to prepare seasonal gift bags to deliver to CoralGables@HOME members when visiting them in their residences.



Junior League Miami Headquarters | jlmiami.org

SOUTH MIAMI ROOFING

Specializing in CORAL GABLES and SOUTH MIAMI
WE HAVE MANY RECOMMENDATIONS FROM HAPPY CUSTOMERS and HAVE BEEN SERVING SOUTH FLORIDA FOR OVER 52 YEARS!

Call us today for a FREE estimate
305.242.0039
Licensed & Insured • #RC29027297



FONTANA

NORTHERN ITALIAN CUISINE

CREATED BY CHEF MARIO CAMIA



Offers homemade pasta, savory meats, and mouth-watering seafood, accompanied by an extensive wine list with selections from around the world. Dine outdoors in the lush tropical courtyard, or indoors at the chef's table with views of the open kitchen and wood-burning oven.

BREAKFAST • LUNCH • DINNER | OPEN 6:30 AM TO 10:30 PM DAILY
FOR RESERVATIONS, PLEASE CALL 305.913.3200

Biltmore

GOLF | SPA | TENNIS | FINE DINING
1200 Anastasia Avenue • 800.727.1926 • 305.445.8066 • BiltmoreHotel.com

We are deeply committed to supporting organizations, like yours, that are investing their time, efforts, funding, and hearts in advancing the well-being of the communities we both serve.



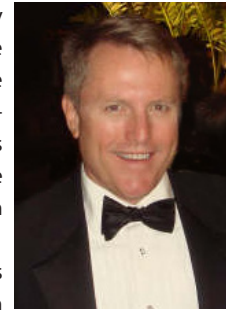
BNY MELLON
WEALTH MANAGEMENT
 Mellon United National Bank
www.bnymellon.com

FEATURED DONOR

William A. ("Bill") Bonn, Esq.

Since he joined the Foundation in 2008, Bill Bonn has been instrumental in developing a strategy to enhance funding for the Foundation. Serving as the Chairman of the Development Committee, Bill was recently asked to also serve as the 2009-10 Foundation Secretary.

Bill became a Coral Gables resident back in 2000 when he and his partner, Ruben Ceballos, acquired the former residence of Claude and Mildred Pepper on Alhambra Circle.



Bill's mother, Marian Bonn, is also a Coral Gables resident, and both are charter members of CoralGables@HOME.

Currently commuting back and forth to Boston for work, Bill is looking forward to staying in Coral Gables permanently at the end of the year. Bill's commitment to helping his hometown community is captured in his thoughts on Development (see article below).

The coming year for CGCF promises to be very exciting as we have grown tremendously in membership and support. This success can be measured by the launch of 2 impressive and extremely beneficial programs for residents over 50:

► **CoralGables@HOME** and ► **Gables Home Page**

“If you are considering getting more involved in your community, I would encourage you to do it now!”

THE ROLE OF COMMUNITY FOUNDATIONS: HELPING YOU MAKE AN IMPACT

Community-based giving has been at the root of American idealism and populism since our nation was founded. The satisfaction derived from helping others and making our community a better place to live is palpable. During downturns in the economy, funding from national and state governments can shrink dramatically, and our nation's community foundations must bridge this gap in resources. Although there certainly is a place in our society for nonprofit organizations on the national or state level, community foundations provide an immediate impact at the local level without multiple layers of bureaucracy.

Coral Gables Community Foundation is an ever-evolving organization that stands prepared to recognize future needs in our community, and to launch new initiatives to address those needs. In these challenging economic times, our Foundation has an even greater responsibility to help maintain and improve the quality of life in our beautiful City. Among the programs we foster, CGCF also gives grant gifts to local charities, and provides several scholarship funds.

The most important point to remember is that the **Coral Gables Community Foundation is**

composed of citizens just like you, who are dedicated to maintaining and improving the quality of life for everyone in Coral Gables through our charitable initiatives.

Most recently, Member services began for **CoralGables@HOME**, an 'aging in place' initiative, and the first program of its kind in the state of Florida, designed to provide member services to help seniors (50 and over) residing in the Gables to stay in their own homes. Please see our website for a list of membership benefits: www.gablesfoundation.org. There are volunteer opportunities available for CoralGables@HOME. If you are interested in helping, please call 305.443.4011.

We kicked off the year with our third annual **"Greening of the Gables"** fundraising gala (see our story on page 6). This black-tie event, open to everyone, was named in honor of The Greening of the Gables initiative (created to address the need for the replacement of trees lost in hurricanes and storms). This is the major fundraising event for the Foundation, and the funds raised this year will be

used to fund the Greening as well as all our other important Foundation initiatives. Each of these initiatives has made Coral Gables a better place to work, attend school, live, and play.

Parknership is another 'green' Foundation program whereby existing parks and fountains are enhanced and restored, and new parks are created, thus ensuring green space for the enjoyment of residents today, and for the generations to follow.

Opening in 2010, the **Coral Gables Museum** is a public/private partnership in conjunction with the City of Coral Gables. The Coral Gables Community Foundation served to incubate this project, and is proud to be a part of helping bring the history of Coral Gables to life in the Coral Gables Museum. Visit www.coralgablesmuseum.org.

CGCF partnered with the City in supporting the first stage of the opening of the **Coral Gables Cinemateque**. (Find out more on page 7.)

Most recently, CGCF was a winner of grant

money from The John S. and James L. Knight Foundation for our **Gables Home Page** project. (Read more about it on page 1.)

You can join The Foundation for as little as \$100 per year, (membership form on the back page) and there are higher levels of membership and additional means of giving through our **Mer-rick Society** (a commitment for planned giving over a 3-year period). It is also possible to set up a charitable fund where a tax deduction is generated in the year of the gift, but the funds can be invested and given out in subsequent years. Also, you may make a donation as part of a planned giving program to a cause that is dear to your heart.

In addition to the vital support that membership gives the Foundation, our corporate sponsors are also critical to our fundraising efforts. Joining the Foundation is a terrific way to become better acquainted with your community and to meet new people who share your love for our city.

Please come join us!

William A. Bonn, Esq.

Coral Gables Community Foundation is a non-partisan, non-sectarian, non-profit 501 (c)3 organization.



The GREENING OF THE GABLES 3RD ANNUAL FUNDRAISING GALA



Thank You to our Generous Sponsors:

Bacardi USA, Inc.
Baptist Health South Florida
The Allen Morris Company

LIVE AUCTION ITEM DONORS

The Allen Morris Company
American Airlines
Biltmore Luxury Golf & Spa Resort
Charles Rigl
Palacio Duhau Park Hyatt Buenos Aires

SILENT AUCTION ITEM DONORS

Ace Tuxedos • Actors' Playhouse at the Miracle Theatre • Alhambra Antiques • André of the Biltmore • The Allen Morris Company • Anacapri Italian Cuisine & Market • Arvane Day Spa • Avant-Garde Salon & Spa • Bacardi USA, Inc. • Baptist Health South Florida • Isabel Balmeseda • Bayside Fish Market & Grill • Benihana • The Big Cheese • BNY Mellon • Books & Books • Romero Britto • Café Abbracci • The Café at Books & Books • John and Julia Carr • Soraya Chemaly • Chuao Chocolatier • The City of Coral Gables • Pat H. Clarke • Cold Stone Creamery • Cuatro Leches Dessert Bakery • The Design Store • Richard and Luba DeWitt • Duffy's Tavern • Equinox Fitness Club • Fairchild Tropical Botanic Gardens • Hans Feyerabend • Florida Marlins • George Rodéz courtesy of miArte Gallery • Giancarlo Designs • Tommy Giles • The Giving Tree • The Green Monkey • The Guayabera Lady • John Branton Gynell • Historical Museum of Southern Florida • Home Made Desserts • House of India • Houston's Restaurant Coral Gables • J. Bolado Clothiers • John Pallot Golf Academy • Klein Jewelers • La Salle Cleaners • MANO courtesy of miArte Gallery • Mariofe Designs • Maroosh Mediterranean Restaurant • Miami Art Museum • Miami Seaquarium • Morphe Gravity Fitness Center • Ocean Reef Club • Peterbrooke Chocolatier • Sauma the Artist • Smith & Wollensky • Snow's Jewelers • Soleil Spa of Coral Gables • Splitsville • Tarpon Bend Raw Bar & Grill • University of Miami • The Vizcayans • Waste Management, Inc. • Whitley Collection • Zen Hair

A SMASHING SUCCESS!

The Country Club Ballroom at The Biltmore Resort was the site of our 3rd Annual "Greening of the Gables" Gala. We received an extraordinary show of support during difficult economic times! Guests generously bid on a wide variety of silent auction items, and some impressive packages were auctioned off live by Mark Trowbridge, President and CEO of the Coral Gables Chamber of Commerce. The evening's emcee was Michele Gillen of WFOR TV.

Special thanks to Gala Founder, Howard Glick. Since the Gala's inception, Howard has created and chaired the Gala Committee. The Board would like to again thank our Gala volunteers and staff who helped bring this event to life, and the many contributors who helped make it so enjoyable: Thanks to AB Covers & Design for the lovely table linens, to Alberto Romeu Photography, and to Peterbrooke Chocolatier for our palm-tree-shaped chocolate favors.



Peter Dolara, Carmen Betancourt Lewis, Mary Lou Rodon-Dolara, and Gene Prescott of the Biltmore Hotel



Carmen Argamasilla, Aurelia "Aura" Reinhardt, and Pat Neal



Frank Santeiro, 2009-10 Chairman Jerry Santeiro, and John Carson



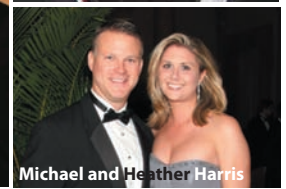
Guests enjoy Hors d'Oeuvres in the Danielson Gallery during the Silent Auction



Gala Founder and Gala Committee Chair, Howard Glick, 2008-09 CGCF Chairman Jeannett Slesnick, Gala GRAND SPONSOR John Esposito of BACARDI USA, Inc., and Mayor Don Slesnick



Ruben Ceballos, Beverly Mills Gyllenhaal, and Bill Benn



Michael and Heather Harris



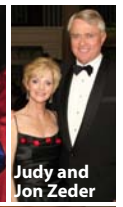
Marc and Leslie Berenfeld and Carolina Rendeiro



Kerri Whittaker and Gala Sponsor W. Allen Morris of The Allen Morris Company



Ana-Maria Rodriguez-Diaz de la Portilla, Irela Bague, Magali Abad, and Berta Bravo



Judy and Jon Zeder



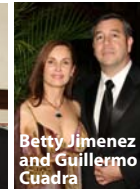
Ariel and Daniela Meyer



John Clark Adams, David Elliso, Larry Kalkstein, and Eris Thomas



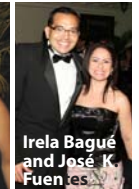
Guests in black tie elegance



Betty Jimenez and Guillermo Cuadra



Eddy and Katie Arriola



Irela Bague and José K. Fuentes



Commissioner Maria Anderson & Ted Evangelakis



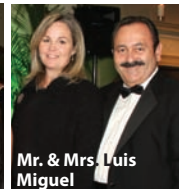
Mike and Sherri Myers Anita and Ron Shuffield



Mr. & Mrs. Mario Argulo, Irina Wolfe, Alfonso and Shannon Perez



Mario and Silvia Garcia Serra



Mr. & Mrs. Luis Miguel



Michele Gillen



Guests mingle at the Silent Auction

Give Mom The Best Give Her Peterbrooke...

- Custom Baskets • Hand Dipped Treats
- Chocolate Covered Popcorn

Shipping & Delivery Available!



Mother's Day, May 10th

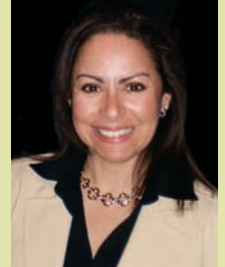
227 Aragon Avenue
Coral Gables
305.446.3131

FOUNDATION PAST CHAIR and 2009-10 CHAIR ELECT HONORED AS TOP WOMEN LEADERS



March was a month of recognition for leaders past and future at the Foundation. **Mary Young**, 2002-03 Foundation Chair was honored at the 21st Annual Awards Presentation of **In The Company of Women 2009**, March 4th at the Biltmore Hotel. The "Mayor's Pioneer Award" was presented to Mary as members of the Foundation, friends, and husband **Frank Young** looked on. Mary's commitment to our community is beyond comparison!

On March 12th, **Irela Bagué**, 2009-10 Chair Elect and Membership Committee Chair, was recognized at the 21st Annual **Women of Impact Awards** hosted by the **Women's History Coalition of Miami Dade County**. Irela was surrounded by family, friends, and colleagues as she received this award at the University of Miami Convocation Center. Irela's energy is contagious and her commitment to the Foundation as well as other organizations is commendable.



COMING SOON: A TREAT FOR FILM LOVERS CORAL GABLES "CINEMATEQUE"



Friends who fondly remember long-time Gables residents **Harry and Mary Perrin** gathered in the early evening, along with the city officials, on February 10th for the dedication of **Perrin Plaza** and, for a sneak peek inside the still-under-construction art cinema, the "**Coral Gables Cinemateque**".

Earlier in the day, a check for \$250,000 from the **Harry and Mary Perrin Charitable Fund** was presented to the City by 2008-09 Foundation Chair **Jeannett Slesnick** at the City Council meeting at City Hall.



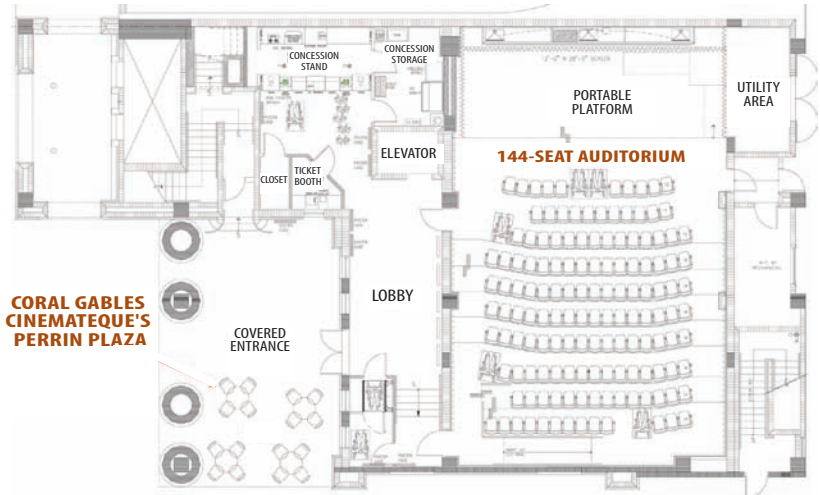
L to R: City Commissioner Maria Anderson, Bobbie Litt, (Perrin cousin) Ann Mumford, Jeannett Slesnick, Mayor Don Slesnick

On hand for the presentation of funds and for the dedication, was **Ann Mumford**, a cousin of the Perrins who traveled from Virginia for the ceremony. The Perrin funds will be used

to help the City bring this long-awaited art cinema project to life. Open to the public, the event featured live music and refreshments. The 144-seat "Cinemateque" is located at 260 Aragon Avenue, at the base of the 600-space Coral Gables Museum parking facility, and will offer a wide variety of programming, including: Daily shows of independent and Hollywood studio motion pictures;

- ▶ A monthly student filmmakers' exhibitions program "Show Your Stuff";
- ▶ An "Inside the Actors' Studio" style interview/Q&A program;
- ▶ Weekly Classic film showings and Children's films to coincide with days off on the school calendar; and . .
- ▶ FREE showings of classic Cuban and/or Spanish language films.

If you are interested in becoming a member of the Cinemateque, please contact Steven Krams at 305-573-7339 or email him at: cginema@aol.com. A limited number of Members contributing at the \$1,000 level will have their names prominently displayed on the Founders' plaque to be dedicated at the October grand opening event.



Ground Floor Plan of the CINEMATEQUE (projection booth on 2nd level) | coralgablescinemateque.org

Coming Soon . . .

The **Cinemateque** is pairing with the **Coral Gables Community Foundation** for a night of **Movers, Movies, and Mojitos** to be held at the beautiful **Old Spanish Village Sales Gallery**. **Watch for your e-vite!**



Perrin Plaza



Inside Sneak Peek at the Auditorium



Steven Krams



Dedication Ceremony



Friends of the Perrins: Suzanne Elmore, Kay Fahringer, Mary Quesenberry, Anne Leidell, Blanche Albi, Edna Kilborn, Ann Mumford, former Mayor Dorothy Thompson, Jack Elmore, Charley Kilborn, and Mayor Don Slesnick

The CORAL GABLES Community Foundation—Please join us!



“Our Members are the driving force behind all our efforts, providing the leadership and resources to support our operations. Membership funds also enable us to participate in high-impact-philanthropic and community-development opportunities—all in an effort to enhance our quality of life for everyone living and working in the Gables.”

2009-10 Membership Committee Co-Chairs

Ana Maria Rodriguez-Diaz de la Portilla



Irela Bagué

ANNUAL GIVING / MEMBERSHIP LEVELS FORM

Please participate with your fellow Gables citizens and join today.

- Member \$100
- Silver \$500
- Gold \$1,000
- Platinum \$2,500
- Merrick Society \$2,500* \$5,000* or \$10,000* (*a 3-year commitment)

MAIL TO:

Coral Gables Community Foundation
1825 Ponce de Leon Blvd., PMB 447
Coral Gables, FL 33134

Please make checks payable to: Coral Gables Community Foundation

Name: _____

Address: _____

City / State / Zip: _____

Phone/Email: _____

Experience the power and impact of creative philanthropy 305.446.9670 | www.gablesfoundation.org

✂ Please clip and return with your membership commitment.

NEW MEMBERS

The Foundation would like to welcome its newest members . . .

- Melissa Bassett ■ David & Julia Rea Bianchi ■ Jaime A. Bianchi ■ Karl & Carmen Bishopric ■ Roy & Lea Black ■ George & Kathleen Bowker ■ James W. Bowling, Jr. ■ Berta Bravo "THE GUAYABERA LADY" ■ G. Lynn & Lisa Chafin ■ Carlton & Andrea Cole ■ James & Ashley Cusack ■ Joyce R. Davidson ■ Susi Davis ■ Richard & Luba DeWitt ■ Peter Dolara & Mary Lou Rodon-Dolara ■ J. Bruce & Alexis Ehrenhaft ■ Tony Gebauer & Aurelia Reinhardt ■ Jane C. Edwards Hall ■ Rex & Marie-Beryl Hamilton ■ Albert & Andria Hanley ■ James & Marie Harley ■ Christopher R. Harrell ■ Andrew Hertz ■ Arthur Hertz ■ Linda Collins Hertz ■ Manuel ("Manny") Huerta, Jr. ■ Stuart & Nancy Iliffe ■ Douglas & Helen Jolly ■ Stefan de Kanter ■ MATRIX HOME CARE, LLC ■ Mr. & Mrs. Jorge A. Mora ■ Alfonso ("Al") & Shannon Perez ■ RBB PUBLIC RELATIONS (Christine Barney) ■ Michel & Marilyn Rittenberg ■ Bonnie Crouch Seipp ■ Elizabeth Silverman, LOVABLES CATERING ■ Alfred G. & Mary Smith ■ Marshall & Morgan P. Smith ■ Bethany Baldwin Tesche

MEMBERSHIP RECEPTION GABLES STYLE

Thanks to the extraordinary generosity of Mr. **Ralph Sanchez**, our Membership Committee hosted the year's first members' reception on March 4th in a gorgeous location! Foundation friends and colleagues gathered in the early evening in the historic **Old Spanish Village Sales Gallery** to enjoy drinks and appetizers compliments of Elizabeth Silverman and **Catering by Lovables**.

Membership Committee Co-Chair **Irela Bagué** welcomed and energized current and prospective members to get involved. **Jerry Santeiro**, Foundation Chair, brought the group up to date on the accomplishments and current work at CGCF. Eleven new members joined the Foundation that evening, and many won exciting door prizes generously donated by **The Guayabera Lady**, **Miami Art Museum**, **UM Basketball**, **Equinox**, **Sauma The Artist**, and **The Giving Tree**. Guests enjoyed a walk-through tour of the Coral Gables Museum's "Celebrate" preview exhibit (located on the second floor of the OSV Sales Gallery) led by Museum Director **Christine Rupp**.

Look for information on our next membership event in late May on our website: gablesfoundation.org, and please join us and bring along any friends you think would like to get involved with the Foundation.



OLD SPANISH VILLAGE
★★★★★
CORAL GABLES

Created by The Next Generation of Gables Pioneers

No question about it. George Merrick is the undisputed Coral Gables pioneer. And today, nearly a century after the first construction shovel hit the Gables soil, he would be pleased to see such a qualified team of new pioneers taking up his vision . . . to create a modern realization of his 'unfinished symphony'. The talent, commitment, and reputation of the people behind the Old Spanish Village development team are without parallel.

PONCE CIRCLE DEVELOPERS, LLC
A joint venture of Sanchez Group, Inc., and Mas Group

For more information contact: Nancy Iliffe, Director of Sales
nancy@oldspanishvillage.com | 2901 Ponce de Leon Boulevard
or, visit us online at: www.OldSpanishVillage.com
T 305.444.1717 F 305.446.5335

